

YEAR
1991

MODEL
LEGEND

VIN APPLICATION
ALL

BULLETIN NO.
91-011



Ashtray Won't Stay Closed

SYMPTOM

The ashtray won't stay in when it's pushed closed.

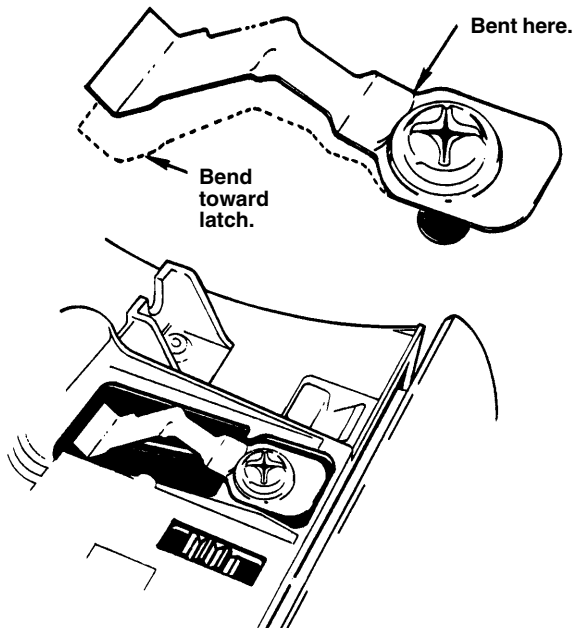
PROBABLE CAUSE

Pulling the ashtray out, instead of pushing it in and letting it come out by itself, deforms the ashtray latch spring.

CORRECTIVE ACTION

Straighten the ashtray latch spring.

1. Remove the center console panel as described in the Body section of the service manual.
2. Remove the four screws that secure the ashtray to the console panel.
3. Turn the ashtray over, then remove the Phillips screw and the latch spring.



4. Straighten the spring (it usually bends near the screw) so that it applies more pressure to the latch.

5. Reinstall the spring. Hold the ashtray upright and level, then check its operation. The spring tension is OK if the ashtray stays in. Remove and re-bend the spring if necessary.
6. Reinstall the ashtray and the center console cover.

WARRANTY CLAIM INFORMATION

In warranty: The normal warranty applies.

Out-of-warranty: Any repair performed after warranty expiration may be eligible for goodwill consideration by the District Service Manager. You must request consideration, and get the DSM's decision, before starting work.

Operation number: 841080
Flat rate time: 0.2 hour
Failed P/N: 77230-SP0-A01
Defect code: 002
Contention code: B01